



ONE IT
SERVICES & SOLUTIONS



Capture observations about student wellness that often go unnoticed



Teachers and other school staff often observe things about students that can point to larger issues in that child's life. If a student shows up to school unkempt, hungry, or with bruises, it's clear there's something wrong, but this type of information isn't always recorded. These incidents can add up, and knowing what a student is going through is crucial for their safety, wellness, and success. While some schools try their best to capture and make sense of this information, lots of crucial data that can help schools understand student needs and provide them with the help they need is lost.

With Securly Observe, you give teachers and other school staff members an easy-to-use, quick way to record wellness observations for any student. With that information at their fingertips, counsellors and student support staff are empowered to give students the resources they need to heal, cope, and stay safe from harm. With Observe, you can:

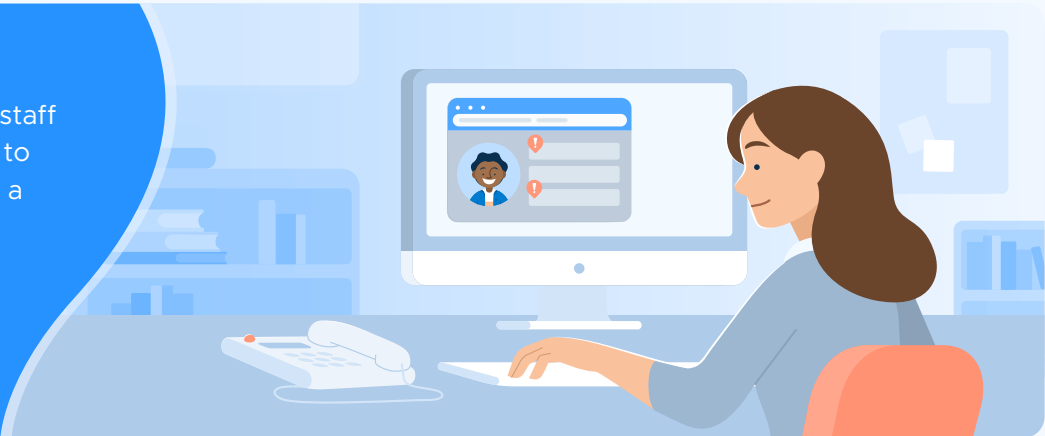
- Give teachers and school staff an easy way to record any wellness observations or concerns.
- Centralise wellness data in an intuitive interface that student support staff can use to take action.
- Search through collected wellness data in an easy-to-use way that lets student support staff keep track of potential concerns before they get worse.
- Integrate real-world wellness observations with online wellness data from Securly Aware and self-reported data from Securly Rhithm.

How Observe works

Teachers and other school staff use Observe to record observations about student wellness when they see something concerning.



Student support staff refer to Observe to understand what a student is going through.



Schools use real-world data from Observe to better understand what students are going through and provide students with useful preventative resources.



Get a holistic picture of your students' safety and wellness with Securly Observe

With Securly Observe, you can simplify capturing student wellness data and know that you're providing at-risk students with the help they need.

Ready to see the power of Observe for yourself?

[Request more information](#)